

2018 ATEA
BOOT
CAMP

Välkommen

Intel

Anders Hüge & Stuart Dommett

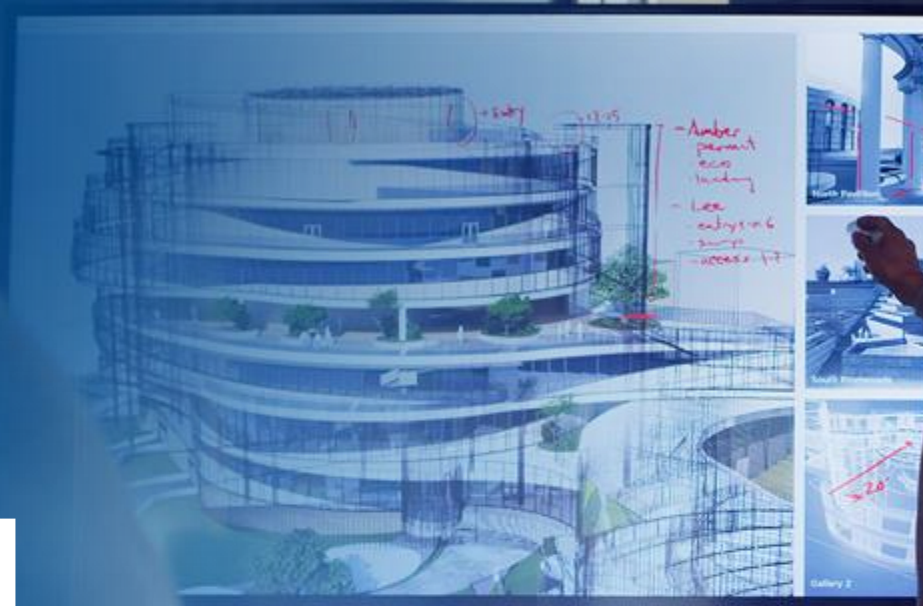
T H E F I X E R S

Säkert & produktivt

Anders Hüge & Stuart Dommett
Intel



WHY INTEL



TRANSFORMING BUSINESS



INTEL VISION

Accelerate workplace transformation with leadership IT capabilities and solutions

MODERN BUSINESS DEMANDS



Higher Productivity



Better Collaboration



Trusted Devices



Reduced OpEx

Intel is transforming computing endpoints to meet the needs of businesses today and tomorrow

THE INTEL® VPRO™ PLATFORM

The Foundation for Business Computing

PERFORMANCE



Keep employees productive

Avoid problems

STABILITY



SECURITY

Protect your business

Lower operational costs

MANAGEABILITY



MORE INFO: www.intel.com/vpro

INTEL® AUTHENTICATE TECHNOLOGY

Hardware-based Multi-Factor Authentication

HP Client Security
Suite



HARDENED FACTORS



PROTECT FACTORS, CREDENTIALS, POLICIES, AND DECISIONS IN THE HARDWARE

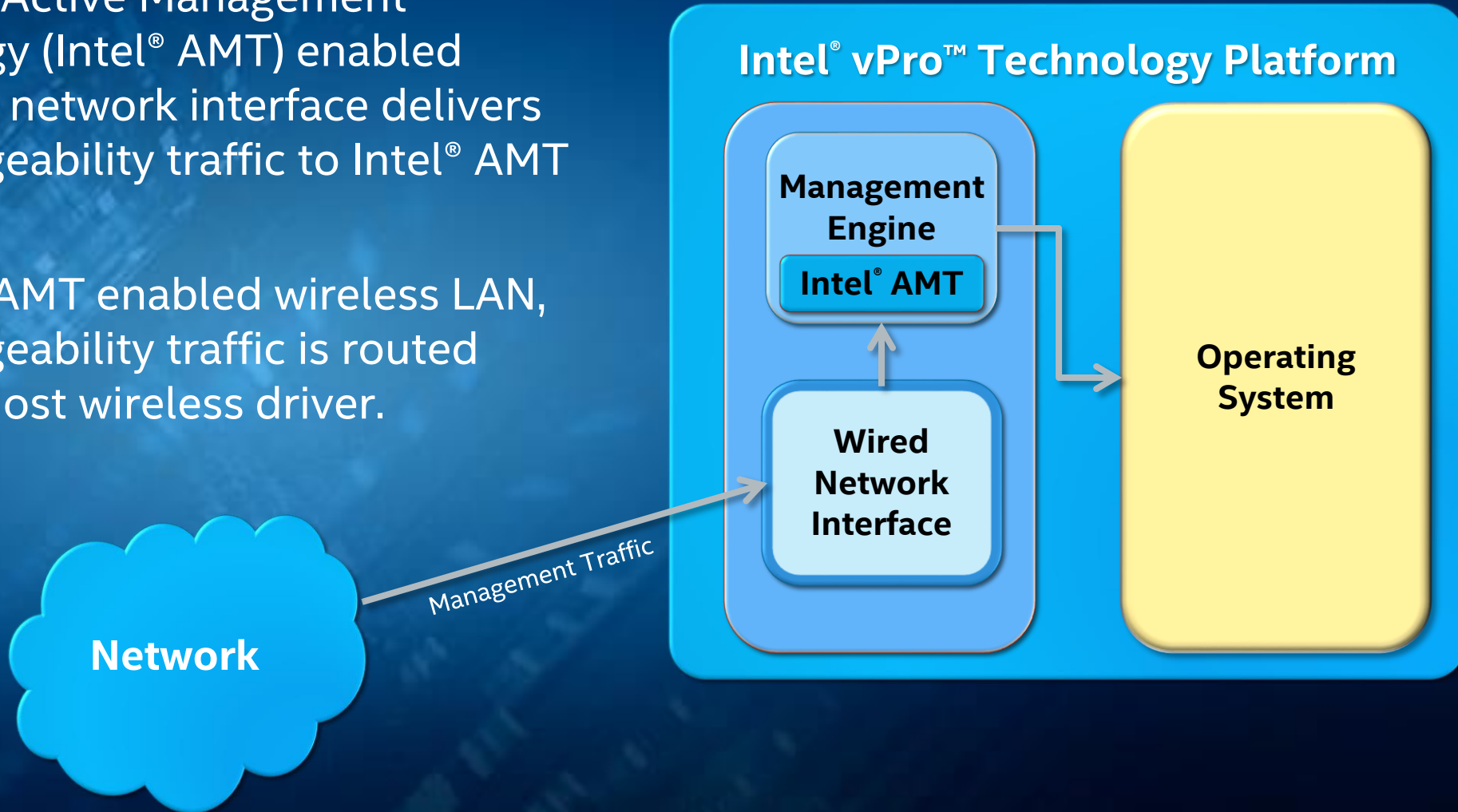
WORLD-CLASS PARTNERSHIP | WORLD-CLASS IDENTITY PROTECTION

MORE INFO: www.intel.com/authenticate

INTEL® AMT INTERFACE OVERVIEW

The Intel® Active Management Technology (Intel® AMT) enabled wired LAN network interface delivers the manageability traffic to Intel® AMT

For Intel® AMT enabled wireless LAN, the manageability traffic is routed from the host wireless driver.



INTEL® AMT FEATURES

Value-added features requested by, and designed for, IT administrators



Features	DASH profiles DMTF's standards for remote management	Intel® Standard Manageability Remote manageability features available on desktop platforms	Intel AMT Full suite of remote device management capabilities
Hardware inventory	✓	✓	✓
Software inventory	✓	✓	✓
User account management	✓	✓	✓
Boot control	✓	✓	✓
Web Services Management (WS-Man) specification	✓	✓	✓
Power state management	✓	✓	✓
Redirection	✓	✓	✓
Alarm clock		✓	✓
Agent presence		✓	✓
Access monitor		✓	✓
Remote configuration		✓	✓
System defense filters		✓	✓
Out-of-band KVM remote control			✓
Wireless Intel AMT			✓
Fast Call for Help (CIRA)			✓
Intel® Remote Secure Erase with Intel® SSD Pro			✓

INTEL® AMT: TAKE CONTROL OF YOUR COMPANY'S DEVICES

REMOTE POWER CONTROL



Manage your entire PC fleet with remote power-on

Power on a single system—or multiple systems across every work site—for remediation or patching.

HARDWARE ALARM CLOCK



Set wake-up times and schedule updates

Save energy by powering devices during business hours only. Ensure maintenance happens even when users aren't in front of devices.

HARDWARE KVM



See it remotely—even when it's down

Keyboard-video-mouse (KVM) provides visibility, even during an OS failure, as if you were sitting in front of the system.

REMOTE ACCESS



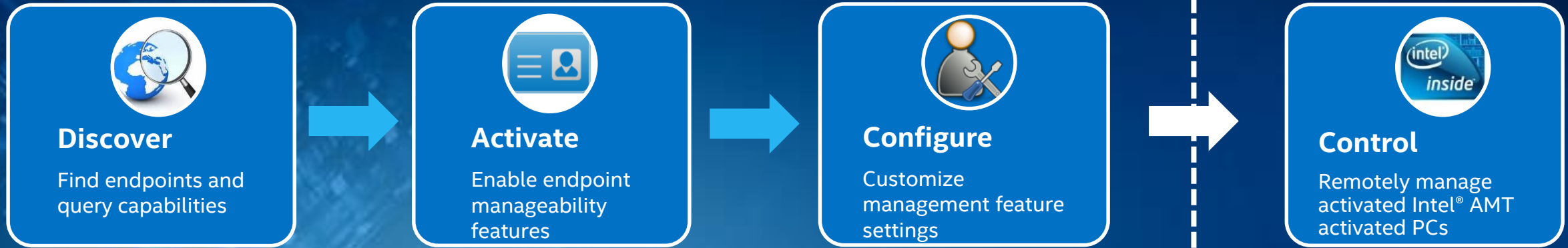
Recover faulty systems without sending a tech

Manage devices that are far away or difficult to access, like hard-to-reach digital signage.

Cut the cost of an IT service call from \$187 to \$60 with remote diagnosis

Source: 2014 CompuCom whitepaper, Intel® vPro™ IT customer data, "Gartner Benchmarking Hardware Supports Costs," December 2013

INTEL® MANAGEABILITY TOOLS



Intel® Setup and Configuration Software (Intel® SCS)
to discover Intel® capabilities such as Intel® Active Management Technology (Intel® AMT) on Intel® vPro™ platforms and configure policies for manageability

Intel® Manageability

Commander:

A lightweight software console to utilize Intel® Active Management Technology (Intel® AMT)

- Allows users to remotely connect to configured Intel® AMT PCs to make use of remote management features such as power control and KVM

Provide ACCESS and USE of Intel® AMT features
Can be INTEGRATED with Manageability consoles
Both products have plugins for MICROSOFT SCCM* release 1511 and newer





PERFORMANCE, SECURITY AND MANAGEABILITY MATTER



+



HP AND INTEL ARE CLOSELY ALIGNED ON THE KEY INDUSTRY TRENDS, AND THE INVESTMENT AREAS TO CAPITALIZE



WINDOWS* 10 RUNS BEST ON THE LATEST INTEL PLATFORMS

• Other names and brands are property of their respective owners

1 Intel® Virtualization Technology for IA-32, Intel® 64 and Intel® Architecture. Intel® Virtualization Technology for Directed I/O. Trusted Platform Module.

**2018 ATEA
BOOT
CAMP**

Tack för mig

Intel

Vill du veta mer, registrera dig vid utgången.

Betygsätt gärna passet i appen.

**REJTA
MITT PASS
I APPEN**

LEGAL NOTICES AND DISCLAIMERS

Software and workloads used in performance tests may have been optimized for performance only on Intel microprocessors. Performance tests, such as SYSmark and MobileMark, are measured using specific computer systems, components, software, operations and functions. Any change to any of those factors may cause the results to vary. You should consult other information and performance tests to assist you in fully evaluating your contemplated purchases, including the performance of that product when combined with other products. Benchmark results were obtained prior to implementation of recent software patches and firmware updates intended to address exploits referred to as "Spectre" and "Meltdown." Implementation of these updates may make these results inapplicable to your device or system. For more complete information visit www.intel.com/benchmarks.

Intel disclaims all express and implied warranties, including without limitation, the implied warranties of merchantability, fitness for a particular purpose, and non-infringement, as well as any warranty arising from course of performance, course of dealing, or usage in trade.

No license (express or implied, by estoppel or otherwise) to any intellectual property rights is granted by this document.

The products described may contain design defects or errors known as errata which may cause the product to deviate from published specifications. Current characterized errata are available on request.

Cost reduction scenarios described are intended as examples of how a given Intel- based product, in the specified circumstances and configurations, may affect future costs and provide cost savings. Circumstances will vary. Intel does not guarantee any costs or cost reduction.

Intel technologies' features and benefits depend on system configuration and may require enabled hardware, software or service activation. Performance varies depending on system configuration. No computer system can be absolutely secure. Check with your system manufacturer or retailer or learn more at intel.com.

This document contains information on products, services and/or processes in development. All information provided here is subject to change without notice. Contact your Intel representative to obtain the latest forecast, schedule, specifications and roadmaps.

Some results have been estimated or simulated using internal Intel analysis or architecture simulation or modeling, and provided to you for informational purposes. Any differences in your system hardware, software or configuration may affect your actual performance. Indicated by (e) or projected.

Intel® Active Management Technology is sophisticated and requires setup and activation. Availability of features and results will depend upon the setup and configuration of your hardware, software and IT environment. To learn more visit: <http://www.intel.com/amt>

No computer system can be absolutely secure. Intel does not assume any liability for lost or stolen data or systems or any damages resulting from such losses. Security features enabled by Intel® Active Management Technology (Intel® AMT) require an enabled chipset, network hardware and software and a corporate network connection. Intel® AMT may not be available or certain capabilities may be limited over a host OS-based VPN or when connecting wirelessly on battery power, sleeping, hibernating or powered off. Setup requires configuration and may require scripting with the management console or further integration into existing security frameworks, and modifications or implementation of new business processes.

Optimization Notice: Intel's compilers may or may not optimize to the same degree for non-Intel microprocessors for optimizations that are not unique to Intel microprocessors. These optimizations include SSE2, SSE3, and SSSE3 instruction sets and other optimizations. Intel does not guarantee the availability, functionality, or effectiveness of any optimization on microprocessors not manufactured by Intel. Microprocessor-dependent optimizations in this product are intended for use with Intel microprocessors. Certain optimizations not specific to Intel microarchitecture are reserved for Intel microprocessors. Please refer to the applicable product User and Reference Guides for more information regarding the specific instruction sets covered by this notice

Intel, the Intel logo, Intel Core, Intel vPro, Thunderbolt and Intel Optane are trademarks of Intel Corporation or its subsidiaries in the U.S. and/or other countries.

*Other names and brands may be claimed as the property of others.

© Intel Corporation For disclosure under NDA only.